

OVERVIEW



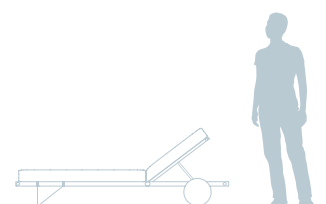
NOA *chaise longue*

AN OUTDOOR SOLUTION OF SUBTLE FINESSE.

Noa carries Myface's contemporary style and meticulous attention to detail to the common daybed. A sophisticated yet simple urban allure embodied by elegant copper plated and lacquered aluminum lines.



YEAR	TYPE	COLLECTION	CONSTRUCTION
2014	Chaise Longue	Myface	Lacquered aluminum structure with copper plated details and lacquered planks. Water-proof acrylic fabric cushions.



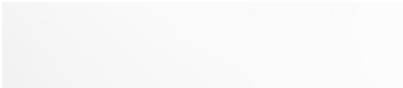
FINISHES



Size and finishes are customizable beyond our suggestions. Contact us for more details.

FRAME

White NCS S 0500-N
Lacquered Aluminum

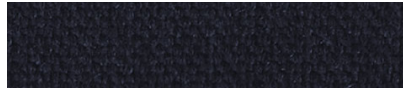


Copper
Copper Plated Stainless Steel



UPHOLSTERY

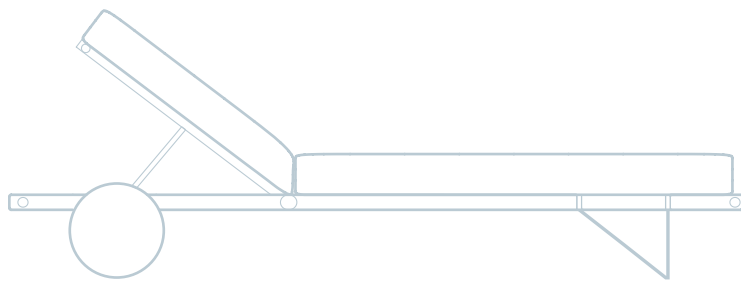
Natte Dusk
Acrylic Fabric



Natte Heat Beige
Acrylic Fabric

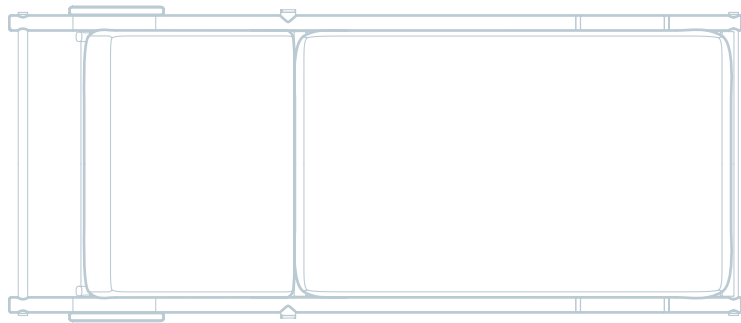


DIMENSIONS



30 cm 11.8"

195 cm 76.8"



80 cm 31.5"